

-
-
-
-
-
-
1. Purposes and goals
 2. Need for the Curriculum
 3. Students
 4. Curriculum
Description of New Courses
 5. Faculty
 6. Facilities, Laboratory Equipment, Supplies and Library Materials
 7. Cost Assessment

1. Purposes and Goals

A. Educational Goals

The goal of the A.A.S. in Emergency Medical Services (EMS) is:

1. to prepare Paramedics who are highly competent in the knowledge, skills and demeanor which meet national, state and regional standards for Paramedic professionals.

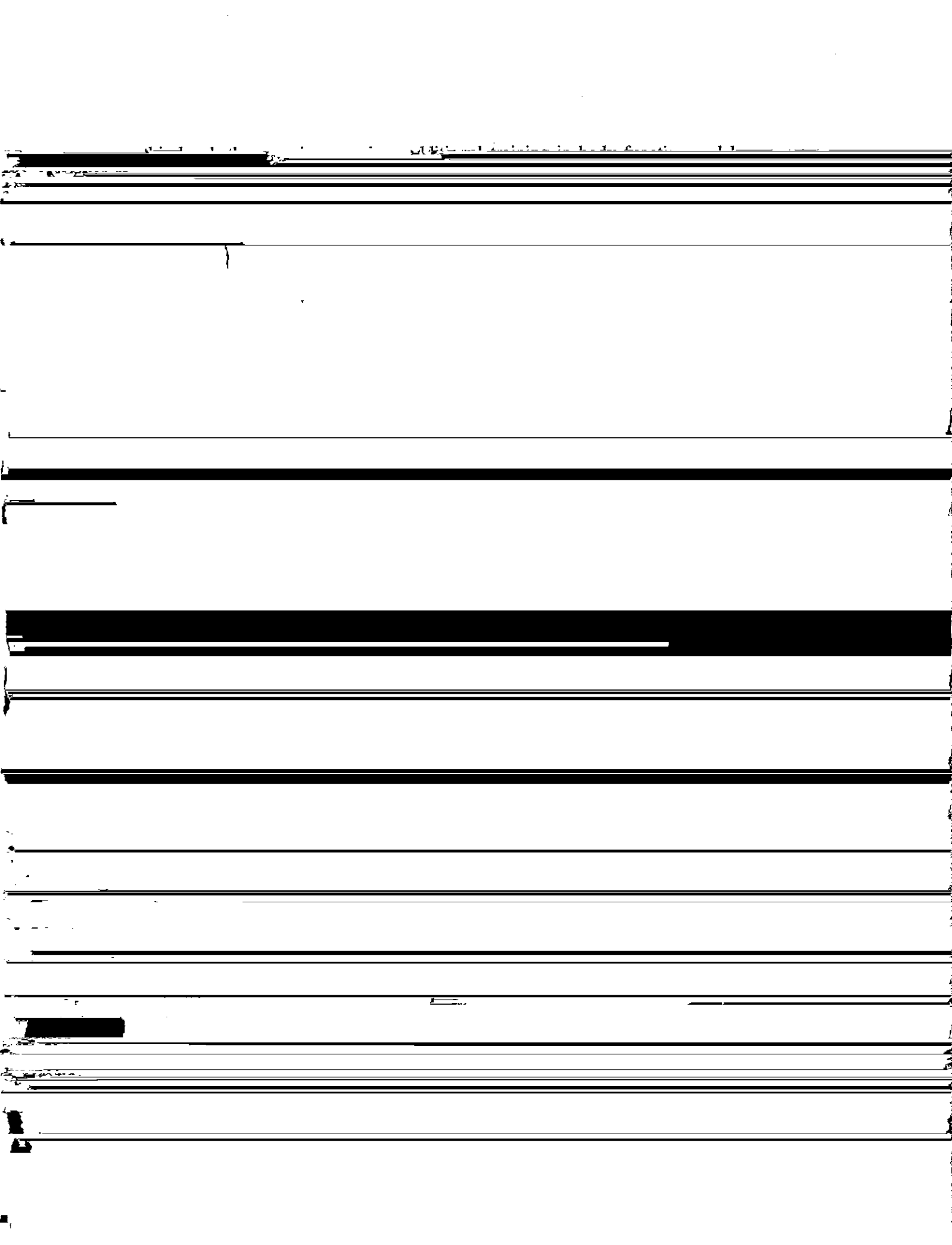
2. to provide a quality general education that facilitates personal development

global citizenship and a foundation for success in further higher education.

All five standard curricula are substantially the same and KCC's A.A.S. in EMS will meet all five, as well as receive national accreditation, NY Department of Health and REMSCO approval for the program.

On April 2010, the New York State Department of Health Bureau of Emergency Medical Services approved KCC as a training agency at the EMT-Basic and First Responder level. As per a conversation with Andrew Johnson, BEMS, the State will not consider upgrading the training level at KCC to Paramedic until the completion of the first review of the newly approved EMT-B course, which starts in September 2010 and ends in January 2011. KCC is currently seeking support from relevant agencies for our request that the State expedite this review and approval process so that the first KCC Paramedic program can start in September 2011.

KCC's Paramedic curriculum will also provide instruction for additional paramedic credentials which are beyond the minimum curriculum essential for program accreditation and approval: American Heart Association (AHA) Advanced Cardiac Life Support (ACLS), Pediatric Advanced Life Support (PALS), Neonatal Advanced Life Support (NALS), National Association of Emergency Medical Technicians Pre-Hospital



components and their roles are clearly defined, their interrelationships articulated, and the decision-making process for modification and improvement established.

In the 1970s, the stakeholders of EMS had no way to predict the challenges that would face the profession during this period of rapid growth. While many of them are volunteers, EMS providers are also paid, full-time personnel. They work in hospital-based or public safety-based programs. Local variations of practice present challenges which are unique to this allied health care profession.

A training site must be approved by the State of New York Department of Health and the

As per a recent conversation with Ms. Diglio on September 3, 2010, the Regional Emergency Medical Services Council of New York City confirms that it will likely look

advanced level certification by NYS DOH. There is also a bridge possibility for Paramedics to ADN programs in the State.

D. Related College Offerings

~~Kirshenbaum is currently offering the EMT Basic course through Continuing Education~~

In its July 2006 *Report of Institutional Goals* to CUNY, Kingsborough made a commitment to target new certificate and degree programs in health occupations. Currently, Letters of Intent are being prepared for five other health professions programs. These are: Veterinary Technician, Occupational Therapy Assistant, Respiratory Therapist, Radiologic Technology and Pharmacy Technician.

The College is pursuing the creation of a new academic department, to be named the Allied Health Sciences Department, which will be responsible for the A.A.S. in EMS as well as five other new health-related technician programs. During this initial stage

between the Letter of Intent and CUNY approval to develop a full proposal, and until a

be able to enroll in some major and clinical courses and complete a semester's work while enrolled for less than 12 credits. Other than these exceptions, first-time freshmen will be advised that the program requires a full-time credit load each semester.

A.A.S in EMS Enrollment Projections

Year I

Year II

Year III

Year IV

Year V

foundation for further higher education and help create a well-rounded individual and citizen.

A. Description of New Courses

EMS 01000 Emergency Medical Technician-Basic

Credit

5

Upon the successful completion of this course and EMT Clinic I, students are eligible to

enroll in the next course, EMT-B Certification Exam. Students must also satisfactorily

EMS 02200 Paramedic II

Credit

3

An introduction to patient assessment and the management of the trauma patient in the

and implementing an appropriate treatment plan for the trauma patient will be

patient transport and practitioner safety are covered. Offered in the twelve-week semester. Prerequisite: Paramedic Clinical II

EMS 02400 Paramedic IV

Credit

3

Patient assessment and formulation of a field impression, and selecting and implementing an appropriate treatment plan for neonatal, pediatric and geriatric patients, patients with diverse needs and chronically ill patients. The student will also learn how to safely

Certification instruction for American Heart Association (AHA) Advanced Cardiac Life Support (ACLS), Pediatric Advanced Life Support (PALS) and Neonatal Advanced Life Support (NALS)

A.A.S. Paramedic Curriculum Outline

Course number		Lecture	Lab	Clinic	Credit
EMS 01000	EMT-Basic	4	3		5
EMS 02100	Paramedic I	6	9		9
EMS 02200	Paramedic II	2	6		3

EMS 02400	Paramedic IV	2	3		3
EMS 01010	EMT-C				1

EMS 02110	Paramedic Clinical I			144	2
EMS 02210	Paramedic Clinical II			288	3
EMS 02310	Paramedic Clinical III			144	2

Paramedic Full-Time (4 semester) Program of Study

Fall / Winter

ENG 01200	Freshman English I	3
BIO 01100	Human Anatomy and Physiology I	4
EMS 01000	EMT-Basic	5
EMS 01010	EMT Clinical *	1
		13

Spring / Summer

BIO 01200	Human Anatomy and Physiology II	4
MAT 02000	Elements of Statistics	3
PSY 01100	General Psychology	3
ENG 02400	Freshman English II	3
		13

Fall / Winter

EMS 021000	Paramedic I	9
EMS 021100	Paramedic Clinical I	2
EMS 022000	Paramedic II*	3
EMS 022100	Paramedic Clinical II*	3
		17

Spring / Summer

EMS 023000	Paramedic III	9
EMS 023100	Paramedic Clinical III	2
EMS 024000	Paramedic IV*	3
EMS 024100	Paramedic Clinical IV*	3
		17

* Uses Winter or Summer module

5. Faculty

Associate Professor George Contreras has been appointed to the Department of Nursing

The faculty of Kingsborough's Paramedic Program will meet or exceed the minimum requirements of the CoAEMSP and New York State as follows:

There will be a full-time program director who holds at a minimum, a master's degree; is proficient in instruction, curriculum design, program administration and evaluation, and student advisement; is a New York State Certified Instructor Coordinator and a Senior Instructor. The EMT-B course will be managed by another New York CIC who will have responsibility for that program. The EMT-B can be part-time or full-time and can teach in the Paramedic Program.

There will be a Medical Director who according to the CoAEMSP standards must:

1) be a physician currently licensed to practice medicine in New York with experience and current knowledge of emergency care of acutely ill and injured patients,

2) have adequate training or experience in the delivery of out-of-hospital emergency care, including the proper care and transport of patients, medical direction, and

quality improvement in out-of-hospital care,

3) be an active member of the local medical community and participate in professional activities related to out-of-hospital care,

4) be knowledgeable about the education of the Emergency Medical Services

Professions, including professional, legislative and regulatory issues regarding the education of the Emergency Medical Services Professions.

7. Cost Assessment

Annual budgets for typical paramedic programs include on-going disposable supplies as well as training equipment for the laboratory and classroom, continuing education for

faculty, accreditation fees and other miscellaneous items. Some of the equipment for a typical paramedic program can be acquired by donation, rented or borrowed. The cost of equipping a paramedic learning laboratory can approach \$350,000 (see table below). The cost of a full-time instructor and program director, plus a medical director and the

15	2015-2016
9	\$198,022
0	\$ 90,000
0	\$ 28,000
9	\$316,022

imum of an adjunct EMT-B

2016	<u>500</u> <u>1,500</u>	<u>200</u> <u>2,200</u>	<u>000</u> <u>000</u>	<u>000</u> <u>1,700</u> <u>1,700</u>
------	----------------------------	----------------------------	--------------------------	--------------------------------------------